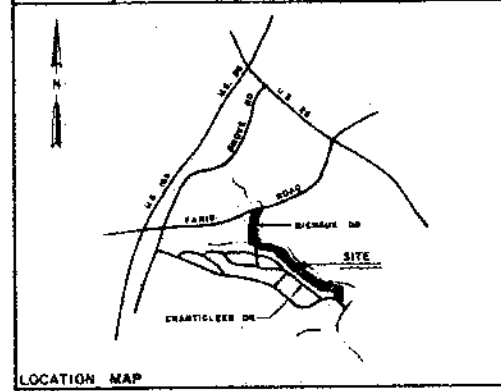
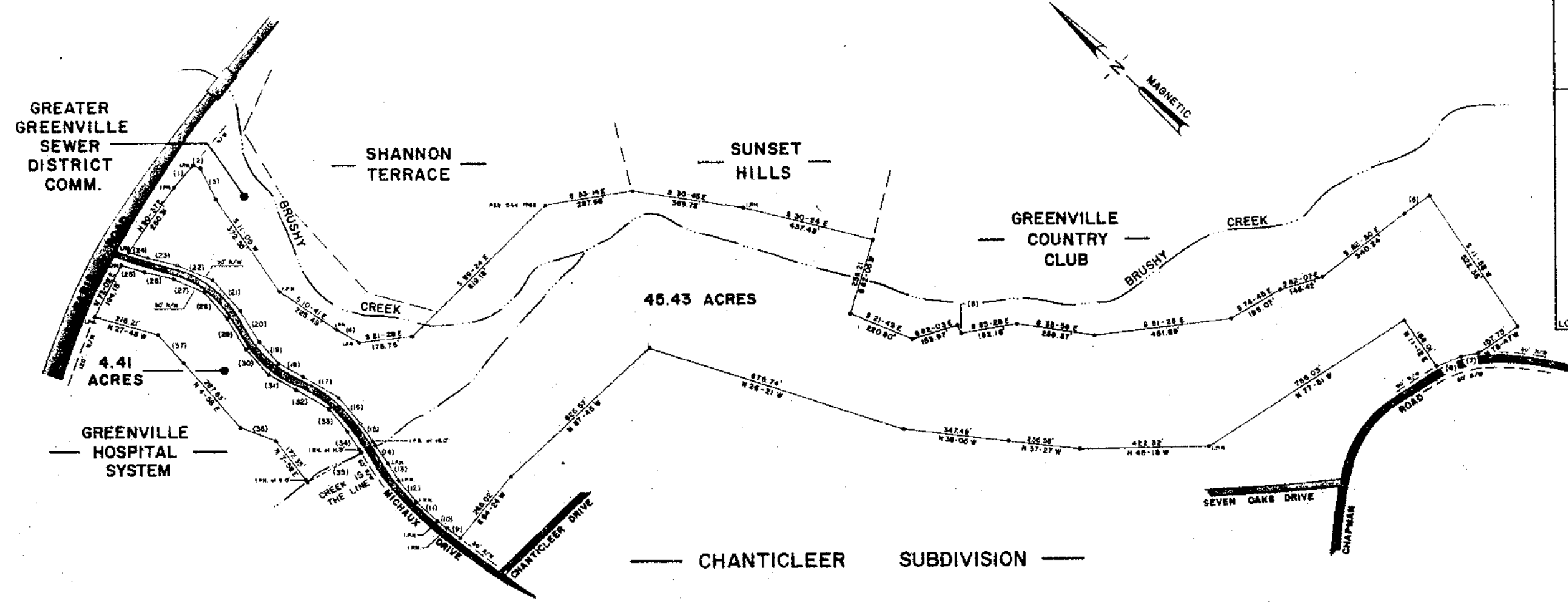


SCHEDULE OF BEARINGS AND DISTANCES		
NO	BEARING	DISTANCE
1	N 84-38 E	96.12'
2	S 19-21 E	28.00'
3	S 19-39 W	173.41'
4	S 14-12 E	96.00'
5	S 17-04 W	39.84'
6	S 79-41 E	108.14'
7	N 80-46 W	87.48'
8	N 87-00 W	86.19'
9	N 8-55 W	88.47'
10	N 7-17 W	30.84'
11	N 2-47 W	93.61'
12	N 7-29 E	95.01'
13	N 11-30 E	84.33'
14	N 12-11 E	73.86'
15	N 12-11 E	88.11'
16	N 5-27 E	111.93'
17	N 13-40 W	137.40'
18	N 18-36 W	92.94'
19	N 4-30 E	96.74'
20	N 14-44 E	120.19'
21	N 4-37 E	130.64'
22	N 21-40 W	128.29'
23	N 30-49 W	99.95'
24	N 28-14 W	88.23'
25	S 24-55 E	90.58'
26	S 30-46 E	99.26'
27	S 22-00 E	108.83'
28	S 4-01 W	110.73'
29	S 10-44 W	120.01'
30	S 4-23 W	113.19'
31	S 16-09 E	101.94'
32	S 14-08 E	127.00'
33	S 8-52 W	96.48'
34	S 12-13 W	83.04'
35	N 79-02 W	201.97'
36	N 84-38 W	123.83'
37	N 3-18 E	126.07'



THIS PLAT IS NOT A SUBDIVISION AS DEFINED BY THE GREENVILLE COUNTY SUBDIVISION REGULATIONS.

4/15/82 *F.J. Forbes*
 Chairman, Secretary, or Director of Planning.
 Greenville County Planning Commission

APR 15 3 29 PM '82
 DONALD W. LAWRENCE
 H.A.L.D.

23069

8-2-38

NO	DATE	BY	DESCRIPTION	APPR
REVISIONS				
PROPERTY SURVEY FOR COLLEGE PROPERTIES, INC. FORMERLY F.H. EARLE ESTATE				
GREENVILLE	SOUTH CAROLINA			
STH	W H S	30 MAR 1982		
1"=200'	1"=200'	82021		

Archer Engineering, Inc.
 200 N. 20th St. GREENVILLE, SC
 ARCHER ENGINEERING, INC. ENGINEERS AND PLANNERS

William D. Archer
 #726

